

RAILTON MEEKS



13 Bridgelea Road

Withington, Manchester, M20 3BJ

£625 Per Calendar Month



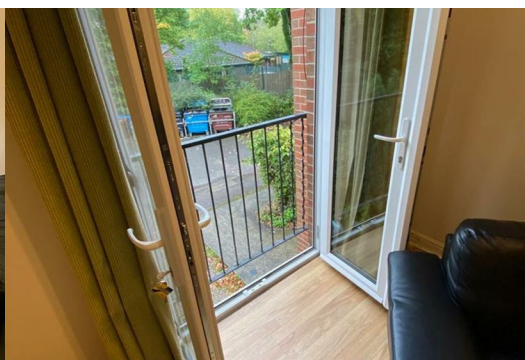
Railton-Meeks are pleased to offer a single double bedroom in a fantastic townhouse-style property.

This spacious house has six double bedrooms in total, along with three bathrooms, a newly renovated kitchen, a dining area, and a large living area with a Juliet balcony.

Location:

The property is in a highly sought-after area, close to Burton Road, Wilmslow Road, and Palatine Road, giving you excellent access to all main bus routes into Manchester city centre and local universities. Ideal for anyone working at Christie Hospital, which is just a stone's throw away.

About the available room:



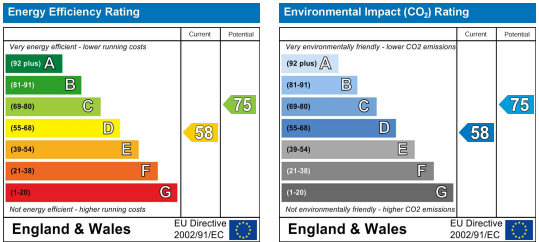
Area Map



Floor Plans



Energy Efficiency Graph



These particulars, whilst believed to be accurate are set out as a general outline only for guidance and do not constitute any part of an offer or contract. Intending purchasers should not rely on them as statements of representation of fact, but must satisfy themselves by inspection or otherwise as to their accuracy. No person in this firms employment has the authority to make or give any representation or warranty in respect of the property.